



MEGA ROBOTIQUE
2000

Model: MEGA 5020/5010

Service # 1-888-694-0802



Button #1: By pressing the ON/OFF button the system is activated or turned off.

Button #2: Press the button PGMR to program the height and rotation limits.

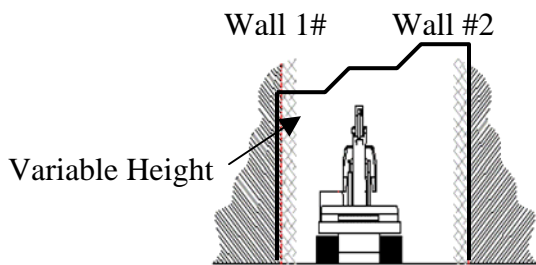
Button #3: The button AUX allows the operator to return to the work area when a limit is reached.

Programming the limits

Height only:

Boom up to the desired limit height and press the PGMR button for 3 seconds, go back to the work area by pressing AUX.

Variable height and rotation:



Rotate the machine to the first limit position (wall #2), Boom up to the desired limit height and press the PGMR button, release the PGMR button immediately. Rotate the machine to the second limit position (wall #2) and press PGMR, go back to the work area by pressing AUX.

* A variable limit height can be recorded during the rotation.